



FRIEDRICH-LOEFFLER-INSTITUT

since 1910

FLI

Bundesforschungsinstitut für Tiergesundheit
Federal Research Institute for Animal Health

Cell autonomous immunity as “Target & Tool” in the defence against intracellular pathogens

Hiddensee 26. – 28. October 2015

Impulse Talk

Michael R. Knittler

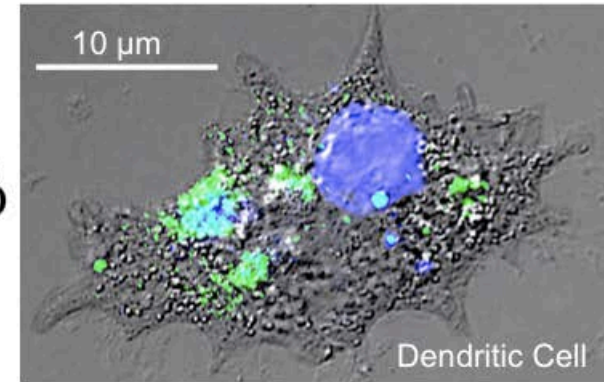
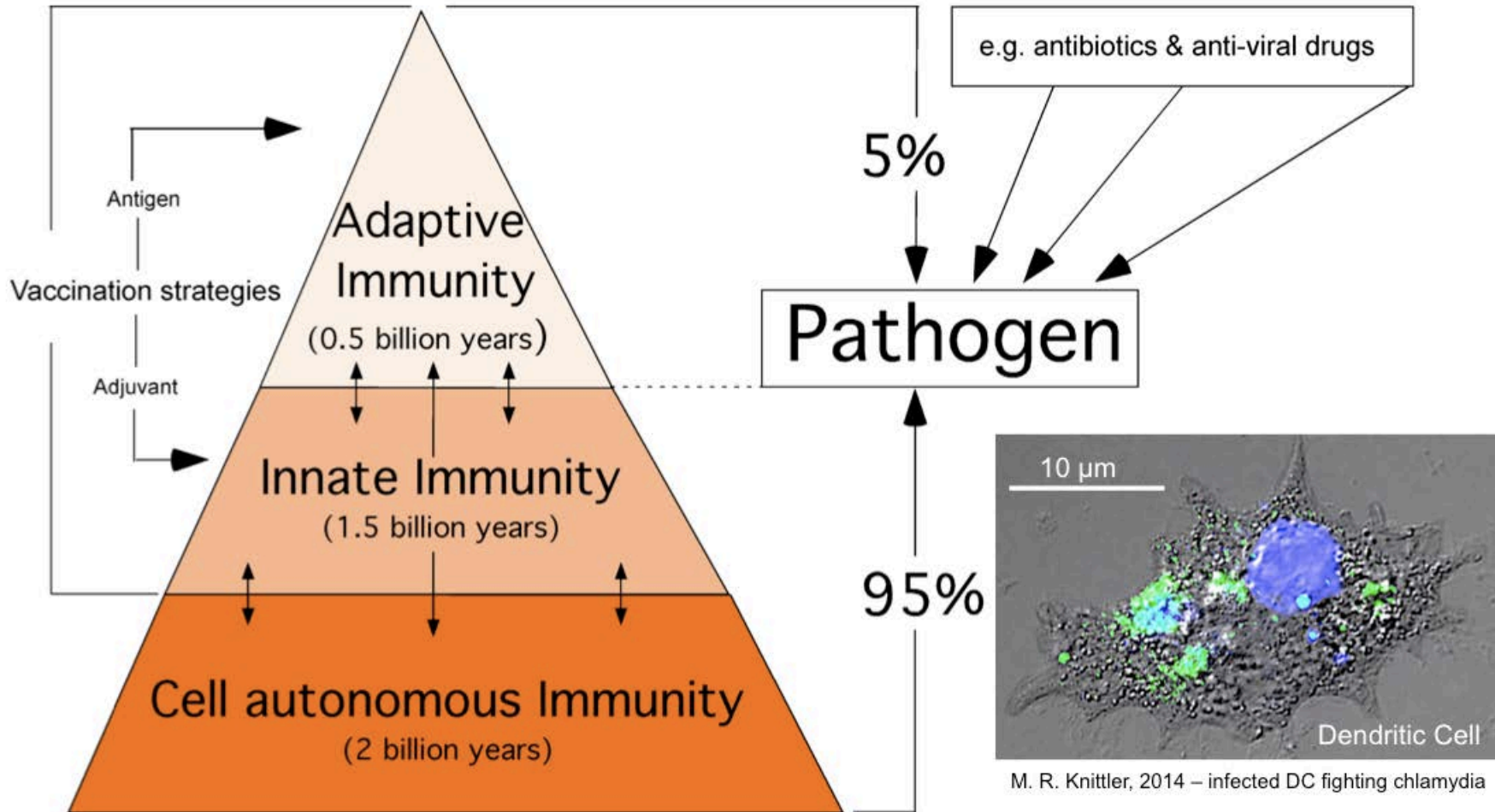
Friedrich-Loeffler Institut

Institute of Immunology



Host-directed therapies

Pathogen-directed therapies

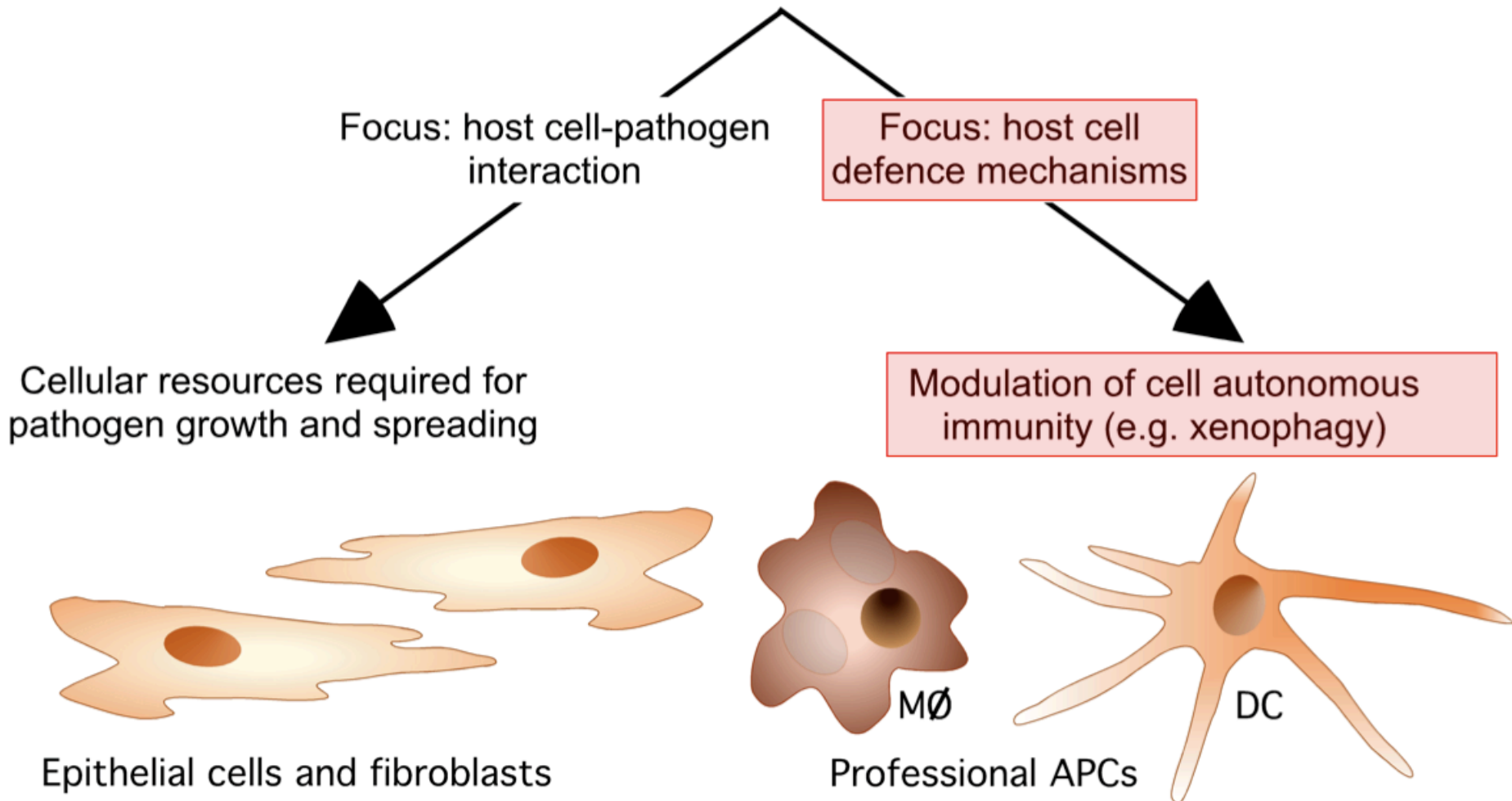


M. R. Knittler, 2014 – infected DC fighting chlamydia

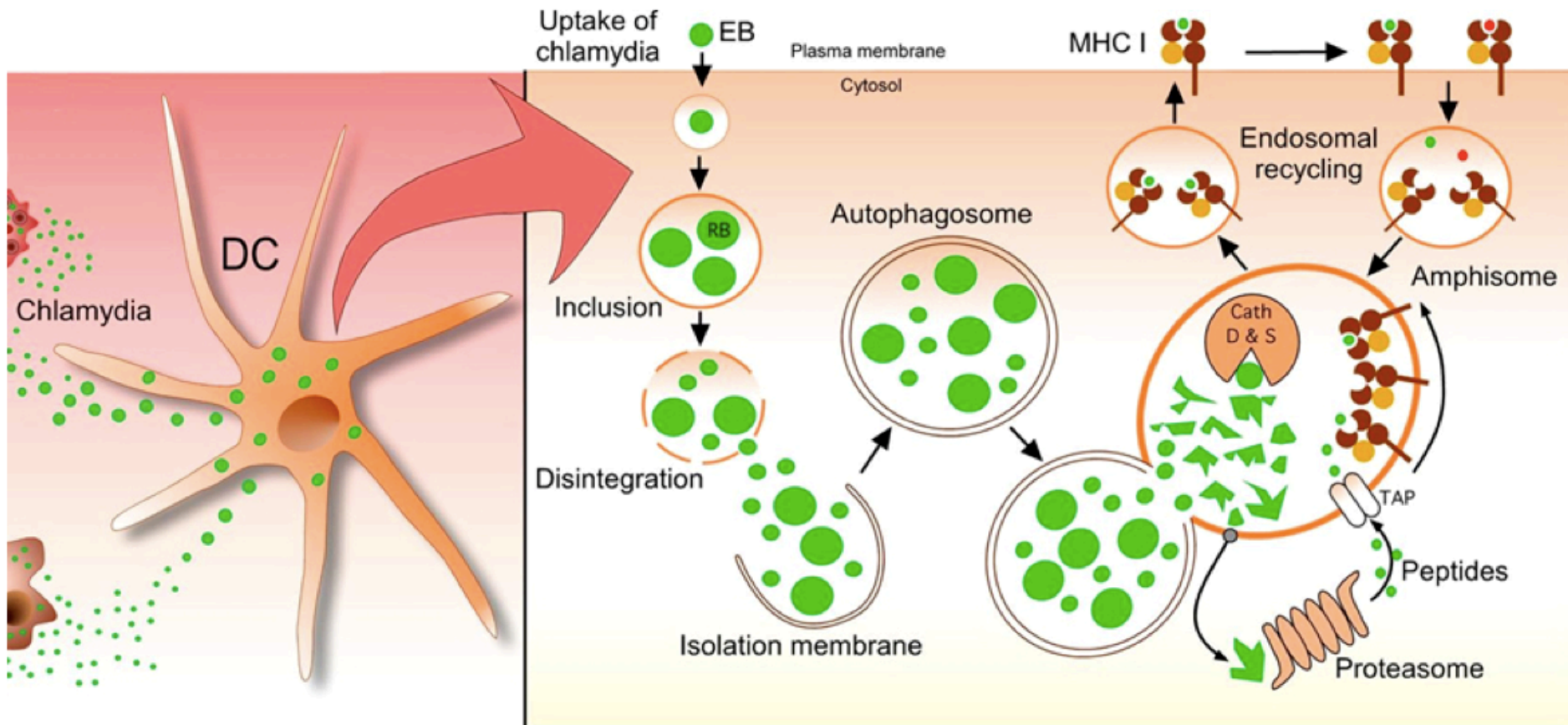
Immune system of vertebrates



“Host (cell)-directed infection therapy”



Bacterial structures & compartments are destroyed by xenophagy & surface presented via MHC-antigen complexes

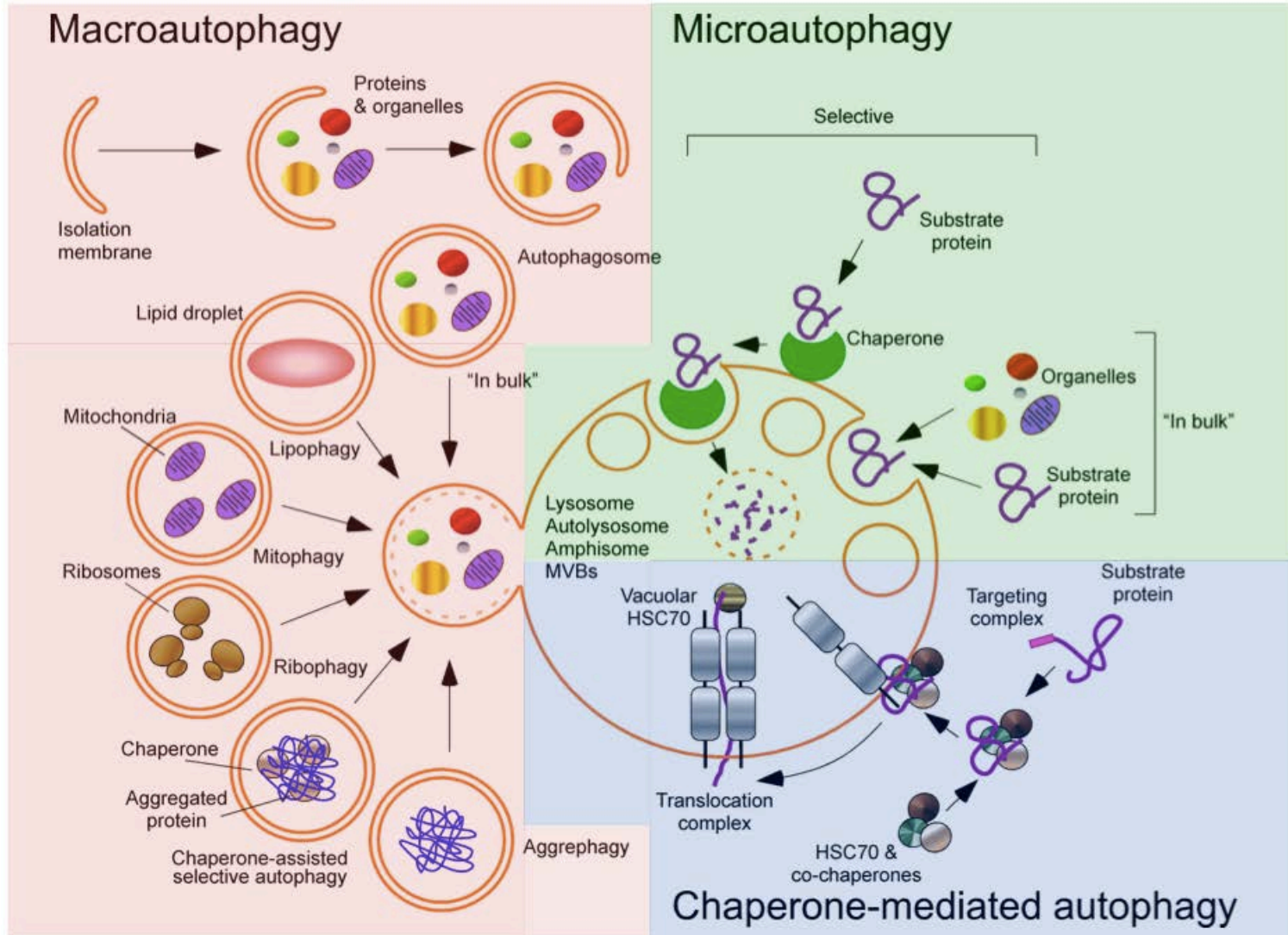


Recent project-related publications

- D. Fiegl, D. Kägebein, E.M. Liebler-Tenorio, T. Weisser, M. Sens, M. Gutjahr, & **M.R. Knittler**, *J Immunol*, 2013,190:2791.
- D. Kägebein, M. Gutjahr, C. Große, A.B. Vogel, J. Rödel, & **M.R. Knittler**, *Infect Immun*, 2014, 82:993.
- **M.R. Knittler** et al., *Int J Med Microbiol*, 2014, 304:877
- **M.R. Knittler** & K. Sachse, *Pathog Dis*, 2015, 73:1
- E. Rufer, D. Kägebein, R.M. Leonhardt, & **M.R. Knittler**, *J Immunol*, 2015, 195: in press.



Autophagy - "All roads lead to Rome"





Autophagy in the focal interest of medical studies & life sciences

