

Deutscher Schweine-Boniturschlüssel (DSBS)

version of 30.05.2017

content: summary, scoring, pictures

developed by:

Kersten Bönisch (LLG ST), Astrid vom Brocke (LWK NW), Sabine Dippel (FLI Celle), Angelika Grümpel (FLI Celle), Luise Hagemann (LELF BB), Christina Jais (LfL BY), Dorothea Lösel (LFA MV), Anja Müller (LfL BY), Simone Müller (TLL TH), Ashley Naya (CAU Kiel), Hansjörg Schrade (LSZ BW), Clara Späth (LLH HE), Christina Veit (FLI Celle), Andrea Wild (LSZ BW), Mirjam Lechner (UEG Hohenlohe-Franken)

supported by:

Thomas Paulke (LELF BB), Miriam Abriel (LfL Bayern), Lars Schrader (FLI Celle), Steffen Hoy (JLU Gießen), Gerhard Quanz (LLH HE), Natascha Klinkel (LLH HE), Heiko Janssen (LWK NI), Felix Austermann (LWK NW), Tobias Scholz (LWK NW), Joachim Krieter (CAU Kiel), Ole Lamp (LKSH), Eckhard Meyer (SMUL SN), Manfred Weber (LLG ST), Katrin Rau (TLL TH), Simone Müller (TLL TH), Thomas Bauer (TLL TH), Dana Madey-Rindermann (BHZP), Eberhard von Borell (MLU Halle)

Nota bene:

- if there are several lesion present score according to most severe one
- for each parameters there is a score 0 ("absent") as reference
- when scoring ears score the worst ear; optionally left and right ear separately
- note different length scoring in docked pigs
- [o] = optional
- n/a = cannot be scored

How to:

- In a group score: total number of animals in group and either
- (a) for each parameter (= simply counting animals without identifying individuals):
- number of animals with lesion
 - number of animals which cannot be scored due to e.g. dirtiness
- or
- (b) for each animal (= individual animal level):
- list of lesion scores (or n/a)

tail	intact				
	not intact	lesion	skin lesion	minor	superficial, points or lines small area (max. tail diameter), deeper
				large	large area (> tail diameter), deeper
				blood [o]	
			necrosis	necrosis (black-brown)	dry wet
				ring-like constriction	
			other [o]	petechia	
				dandruff	
				crusts	
				discolouration longitudinally split tip	
			swelling		
		loss of length (undocked pigs)	partial	<= 1/3 missing	
				<= 2/3 missing	
		> 2/3 missing			
		complete (stump)	complete (stump)		
		loss of length (docked pigs)	partial	<= 1/2 of docked length missing	>> only score if you are sure of basic docked length (farmer information + comparing with animals in barn). If in doubt, use less differentiating level or n/a.
> 1/2 of docked length missing					
complete (stump)	complete (stump)				
n/a					

furthermore:

location [o]
bent tail [o]
innate short tail [o]

ears	intact			
	not intact	lesion	skin	<=1/4 of ear edge
				>1/4 of ear edge
				fresh blood [o]
		necrosis (black-brown)	dry	
		swelling	wet	
		parts of ear missing	<=1/4 of ear missing	
	>1/4 of ear missing			
	n/a			

furthermore:

location [o]

other	intact
	lateral view: lesions
	vulva: red, swollen, injured or discoloured black/brown

Please see notes and recommendations in summary

		score	Level 1: detailed	Level 2: summarised	Level 3: even more summarised
tail	skin lesion: severity	0	no lesion visible, skin is intact	no lesion visible, skin is intact	
		1	superficial, points or lines		
		2	deeper skin lesion of small size, (max. size = tail diameter at respective location)	minor: lesion with maximum size = tail diameter at that location	
		3	deeper skin lesion of large size, (larger than tail diameter at respective location)	large: lesion larger than tail diameter at that location	
Blood [optional]		0	none	none	
		1	yes: dry, dark red		
		2	yes: blood red, wet, fresh, liquid	yes: red, wet or dry	
necrosis: type		0	none	none	
		1	dry necrosis: dry, / drying off tissue, black-brown discolouration, looks mummified or like drying off umbilical cord		
		2	wet necrosis: wet, black-brown discolouration, slippery (possibly purulent), decomposed-looking tissue	necrosis: black-brown discolouration of tissue	
ring-like constriction		0	no		
		1	yes		
other lesions [optional]: present / absent		P	point-shaped haemorrhages (petechia; max. pinpoint size red(ish) dots) without broken skin		
		D	dandruff / thin dry whitish flakes of dead skin that come off freely		
		C	crusts without (evidently) broken skin		
		Dis	discolouration (blue, violet) without broken skin		
		Sp	longitudinally split tip of tail		
swelling [optional]		0	none		
		1	yes		

loss of tail length (undocked animals)	0	tail has natural length (ideally with flattened end, possibly with tassel)	tail has natural length (ideally flattened end, possibly with tassel)	tail has natural length (ideally flattened end, possibly with tassel)
	1	up to 1/3 of length missing	partial loss	partial / complete loss
	2	up to 2/3 missing		
	3	>2/3 missing		
	4	complete loss (stump of max. 0.5 cm in suckling piglets, 1 cm in weaned piglets, 2 cm in fattening pigs)	complete loss (stump of max. 0.5 cm in suckling piglets, 1 cm in weaned piglets, 2 cm in fattening pigs)	
loss of tail length (docked animals) <i>NB remarks in summary</i>	0	tail has docked length	tail has docked length	
	1	up to 1/2 of originally docked length missing	partial loss	partial / complete loss
	2	> 1/2 of originally docked length missing		
	3	complete loss (stump of max. 0.5 cm in suckling piglets, 1 cm in weaned piglets, 2 cm in fattening pigs)	complete loss (stump of max. 0.5 cm in suckling piglets, 1 cm in weaned piglets, 2 cm in fattening pigs)	
other	X	bent tail [optional]		
	IST	innate short tail [optional] (can only be scored directly after birth)		
all parameters: location [optional]	B	base of tail	base of tail	
	1	1st third	middle (M)	
	2	2nd third		
	3	3rd third		
	T	tip of tail	tip of tail	
	+	several locations	several locations	

ears	skin lesion: severity	0	no skin lesion or lesions clearly caused by fighting	no skin lesion or lesions clearly caused by fighting
		1	skin lesion affecting ≤1/4 of ear edge, ear surface respectively	skin lesion
		2	skin lesion affecting >1/4 of ear edge, ear surface respectively	
blood [optional]	0	none		
	1	yes: red, wet or dry		
necrosis: type	0	none	none	
	1	dry necrosis: dry, / drying off tissue, black-brown discolouration, looks mummified or like drying off umbilical cord	necrosis: black-brown discolouration of tissue	
	2	wet necrosis: wet, black-brown discolouration, slippery (possibly purulent), decomposed-looking tissue		






location [optional]	T	tip of ear	
	B	base of ear (connection ear-head)	
	O	other parts of ear	
	+	several parts of ear	
parts of ear missing	0	no parts missing or not clearly identifiable	no parts missing or not clearly identifiable
	1	<=1/4 of ear missing	parts of ear missing
	2	>1/4 of ear missing	


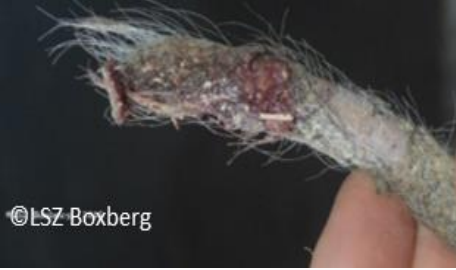


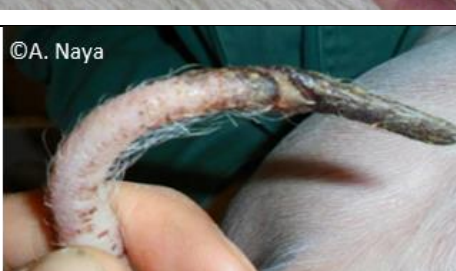

other	lateral view: lesion	0	no circular skin lesion (longitudinal lesions do not count)
		1	circular skin lesion(s) in lateral view (fresh or with crust; shoulder until hind quarters; above elbow or hock, respectively)
	lateral view: lesion location [optional]	S	shoulder
		F	flank
		H	hips / upper thighs
		+	several areas
	Vulva	0	intact and normal
		1	red discolouration, swelling, broken skin, black-brown discolouration

Deutscher Schweine-Boniturschlüssel (DSBS) - pictures -

- scores with „?“ cannot be clearly identified on the picture but picture was kept as example for other parameters
- - = not applicable

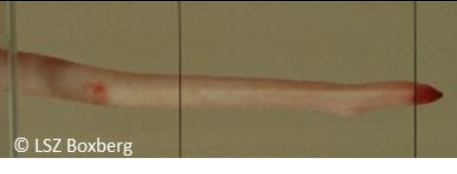

1 Tail

picture	Skin lesion: severity	Skin lesion: location [o]	blood [o]	Necrosis: type	Necrosis: location [o]	ring-like constriction	other	swelling [o]	loss of length	bent tail [o]
 ©LSZ Boxberg	0	-	0	0	-	0	0	0	0	0
 ©A. Naya	1	M/T	1	1?	T?	0	0	0	0	0
 ©LSZ Boxberg	2	T	1	0	-	0	0	0	0	0
 © FLI	2	T	1	0	-	0	-	0	0	0
 ©A. Naya	2	T	0	1	T	0	0	0	0	0

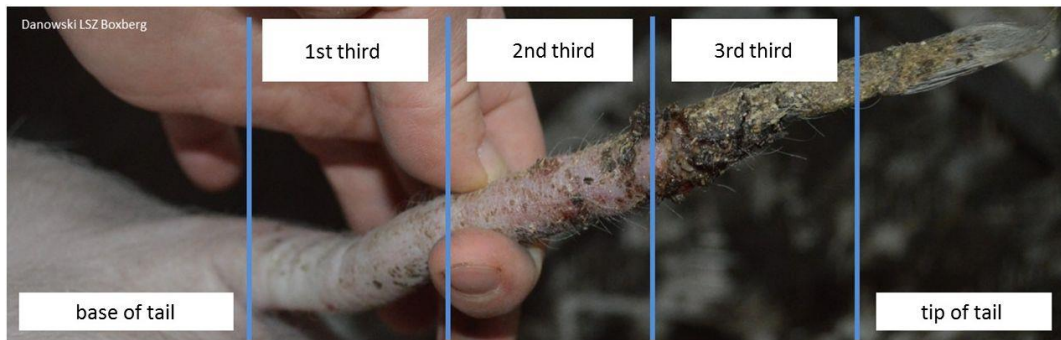
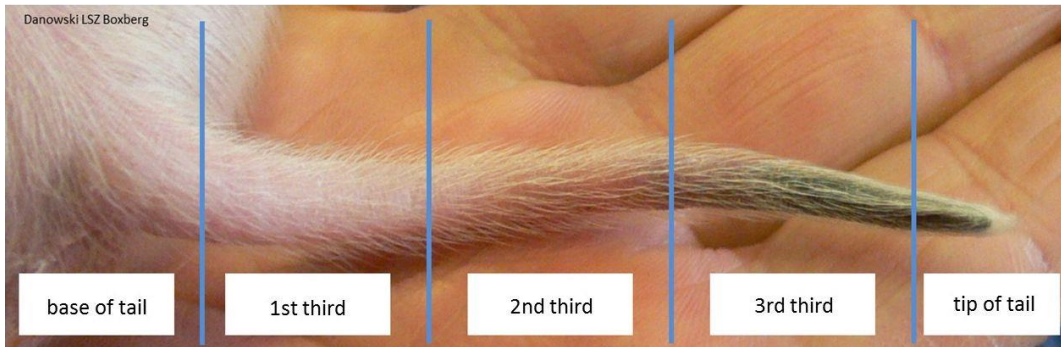
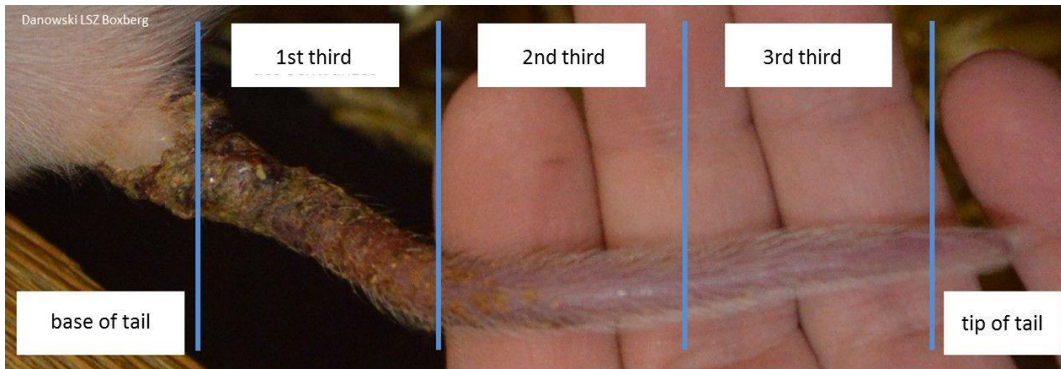
picture	Skin lesion: severity	Skin lesion: location [o]	blood [o]	Necrosis: type	Necrosis: location [o]	ring-like constriction	other	swelling [o]	loss of length	bent tail [o]
 <p>©LSZ-Boxberg</p>	2	M/T	0	1 or 2?	T	0	0	1	0	0
 <p>©LSZ-Boxberg</p>	2 or 3?	T	1	1 or 2?	T	0	C	0	0	0
 <p>©A. Bidmon</p>	2 or 3?	T	0	1	T	0	0	1	0	X
 <p>©A. Bidmon</p>	3	M	1	2	T	0	0	0	0	0
 <p>©A. Naya</p>	2	T	0	1 or 2?	T	0	0	0	0	0
 <p>©A. Bidmon</p>	2	M	1	1	T	0	0	0	1	0

picture	Skin lesion: severity	Skin lesion: location [o]	blood [o]	Necrosis: type	Necrosis: location [o]	ring-like constriction	other	swelling [o]	loss of length	bent tail [o]
	2	T	0	0	-	0	0	1	1	0
	3	M/T	1	2	T	0	0	0	1	0
	3	T	0	1	T	0	0	0	1	0
	3	T	0	1	T	0	0	1	2	-
	3	M	1	0	-	0	C	1	2	-
	3	B	1	0	-	0	-	0	3	-

picture	Skin lesion: severity	Skin lesion: location [o]	blood [o]	Necrosis: type	Necrosis: location [o]	ring-like constriction	other	swelling [o]	loss of length	bent tail [o]
 © C.Veit	2 or 3?	B	0	1	B	0	0	1	4	-
 © A. Eisenack	2	B/M	0	1	B/M	1	0	0	0	0
 © LSZ Boxberg	2	T	0	1	S	0	Sp	1	1	0
 © A. Naya	1	B	0	0	-	0	D	0	-	-
 © A. Naya	3	B	0	1	B	0	Dis, C	0	0	0
 © BOKU	3	B/M	0	1	M	0	0	1	0	0


picture	Skin lesion: severity	Skin lesion: location [o]	blood [o]	Necrosis: type	Necrosis: location [o]	ring-like constriction	other	swelling [o]	loss of length	bent tail [o]
 © LSZ Boxberg	1	B	1?	0	-	0	P	0	0	0
 © LSZ Boxberg	1	T	1?	0	-	0	P	0	0	X

Tail: location (examples for tail sections)



2 Ears

picture	Skin lesion: severity	Skin lesion: location [o]	blood [o]	Necrosis: type	Necrosis: location [o]	parts of ear missing
 © BOKU	1	T	0	1	+(T, B)	0
 © BOKU	2	B	1	0	-	0
 © I. Czycholl	1 or 2?	+(B, T)	1	1	T	1
 © BOKU	2	+	1	0	-	1 or 2?
 © BOKU	2	+	1	0	-	2

	0	-	0	0	-	2
---	---	---	---	---	---	---

3 Other

picture	lateral view: lesion	lateral view: lesion location [o]	vulva
	0	-	-
	1	S	-
	1	H	-
	-	-	1 (left: red discolouration, right: red dicolouration + lesion)